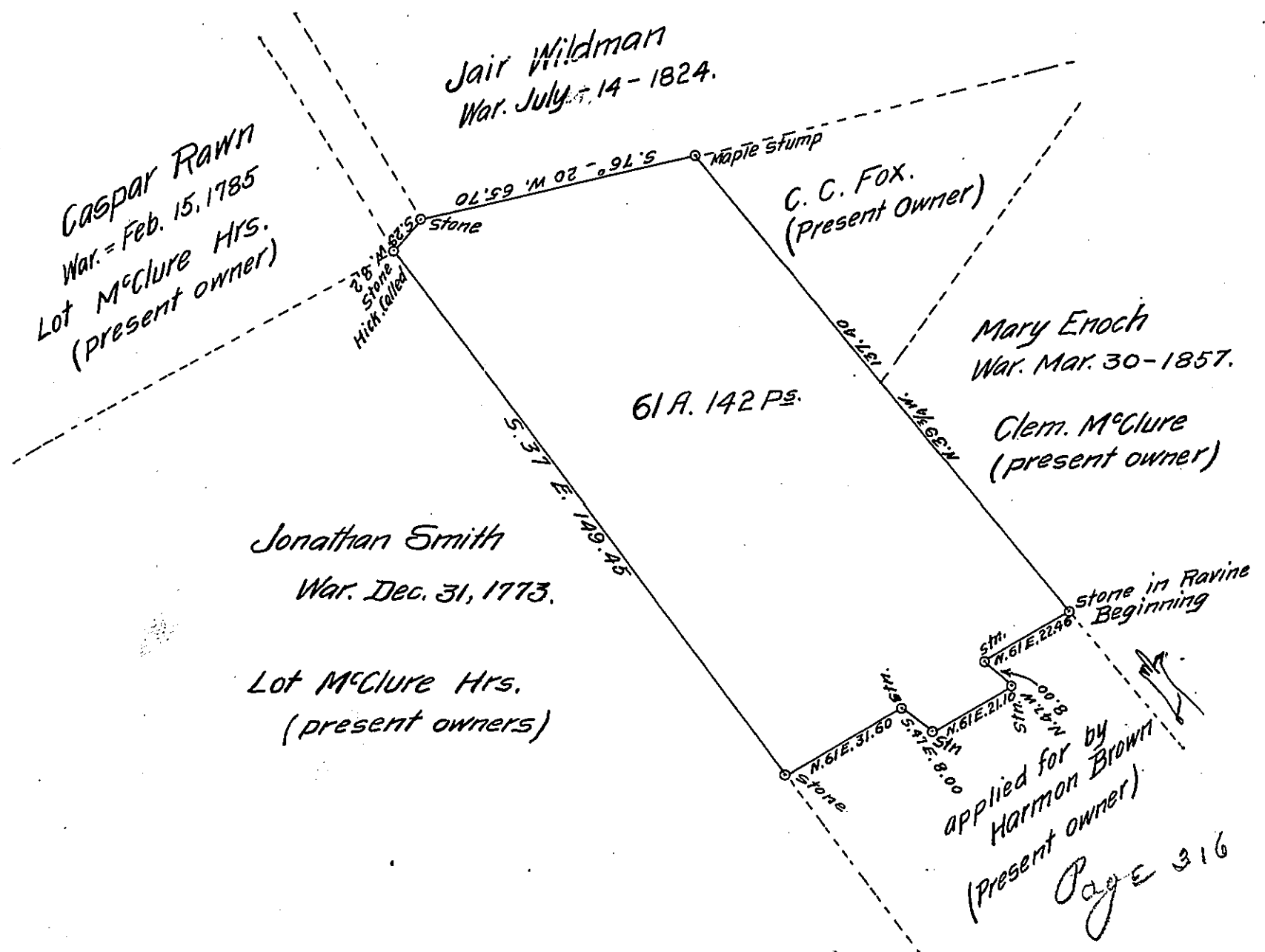


FORM No. 1.



A Draft of a tract of land situated in the township of Dunhard and County of Greene containing 61 acres 142 perches and allowance of six per cent. for roads, etc. Surveyed for W. W. McClure et al. the 15th day of Dec. 1910, it being part of a larger tract containing 393 acres, 128 perches and allowance, originally surveyed in pursuance of a warrant granted to Jno. Cox dated the 31st day of Dec. 1773.

To Hon. Henry Houch
Secretary of Internal Affairs

J. C. Webster
County Surveyor.

IN TESTIMONY that the above is a copy of the original remaining on file in the Department of Internal Affairs of Pennsylvania, made conformably to an Act of Assembly approved the 16th day of February, 1833, I have hereunto set my Hand and caused the Seal of said Department to be affixed at Harrisburg, this first day of March 1911.

Henry Houch
Secretary of Internal Affairs.